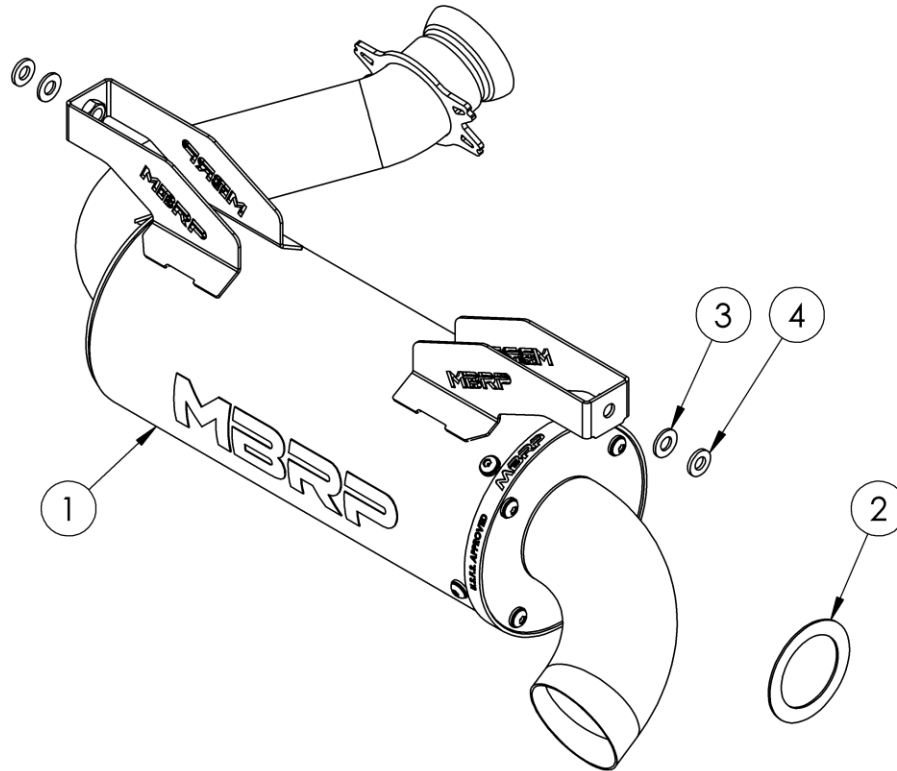


# AT-9801PT

PERFORMANCE MUFFLER ASSEMBLY, 5", SLIP-ON  
2014-2022 CFMOTO ZFORCE 800 (Z8/Z8EX/800/800EX)

# MBRP



ITEM NO.	DESCRIPTION	QTY.
1	MUFFLER ASSEMBLY	1
2	RING INSERT	1
3	M8 WASHER	2
4	LOCK WASHER	2

## PLEASE READ BEFORE STARTING INSTALLATION

While MBRP Ltd. has made every effort to ensure that all components of this system are of superior quality and properly packaged, it is the installer's responsibility to ensure the following before removal of the factory exhaust:

- that ALL components shown above are present.
- that ALL mating components fit together.
- that there are no damaged components.
- that the system you have purchased is appropriate for your vehicle year, model and configuration.
- that the system will not interfere with any modifications previously installed or planned.
- that you have read and understand these instructions.

If you have any questions or are uncertain about any aspect of the installation of this system to your vehicle please contact your dealer before commencing installation.

# MBRP

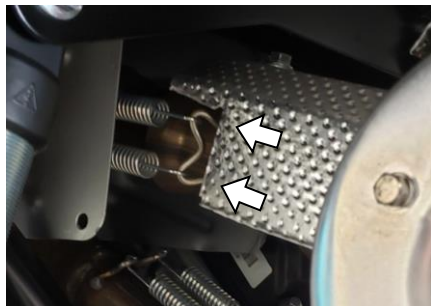


Figure 1

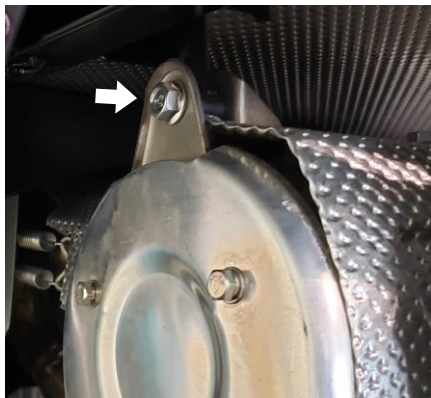


Figure 2



Figure 3



Figure 4

## Removal of Stock Exhaust:

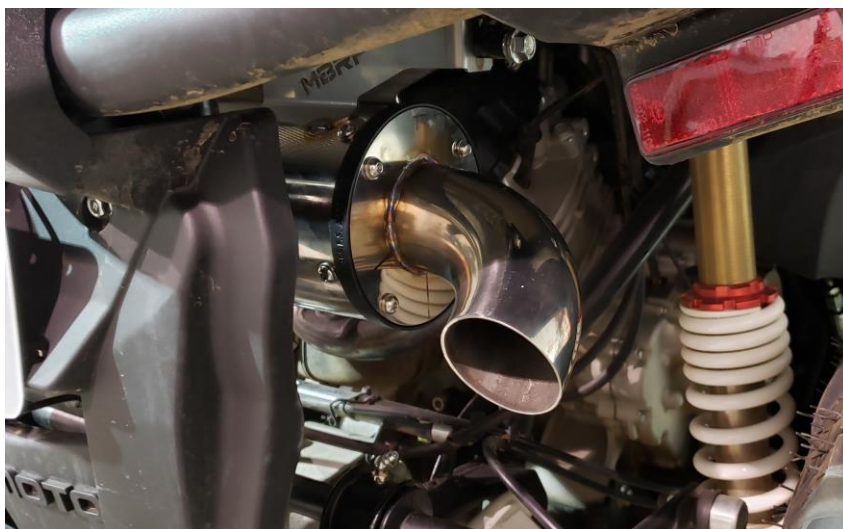
1. Remove the four (4) springs at the muffler inlet connection. Refer to Figure 1.
2. Remove the two (2) bolts from the upper muffler mounts (Refer to Figure 2) and then remove the muffler. Do not discard the bolts as they will be reused.
3. Ensure that the stock gasket remains intact and on the front pipe connection – it will be reused.

## Installation of MBRP Exhaust:

1. Slide the new **Muffler Assembly** into position with the inlet over the gasket of the exhaust front pipe.
2. Reuse the stock bolts (2) along with the **M8 Washer** and **Lock Washer** to secure the muffler to the upper vehicle mounts. Do not fully tighten yet. Refer to Figure 3.
3. Reinstall the springs (4) onto the muffler inlet. Refer to Figure 4.
4. Finally, fully tighten the bolts to the upper mounts.

**It is recommended that the muffler outlet screws be retightened (60in-lbs) after the first ride and checked periodically thereafter, tightening if necessary.**

**Note:** This muffler utilizes a quiet insert (pre-installed) to limit sound levels. If increased exhaust flow is desired, replace the quiet insert with the **Ring Insert** by removing the muffler tip and the spark arrestor. Reinstall the spark arrestor with the **Ring Insert**. Note that tuning may be required for optimal performance with the increase in flow capacity.



**Congratulations!** You are ready to begin experiencing the improved performance and driving excitement of your **MBRP** ATV Exhaust upgrade. We know you will enjoy your purchase.



**Figure 1**



**Figure 2**



**Figure 3**



**Figure 4**

## Spark Arrestor Maintenance

In order to maintain optimal performance, the spark arrestor screen should be cleaned after every 30-35 hours of use.

### Clean-out Instructions:

Make sure the vehicle is cool before completing the clean-out procedure.

1. Using a 4mm hex key, remove the 4 screws securing the outlet cap or tip. **(Figure 1)**
2. Remove the outlet cap to expose the spark arrestor screen insert. **(Figure 2)**
3. Remove the screen insert. **(Figure 3)**
4. Using a wire brush, thoroughly brush the screen to remove residue. **(Figure 4)**
5. Replace the screen and cap.
6. Tighten the screws to 60 in-lbs (6.8 Nm).